



# STEP Conference 2021

Thursday 10 June 2021



# Introductions



**Paul Beale**

*Director, Head of Family Office & Private Client*

+44 (0) 1481 755798

paulbeale@kpmg.com



**Natalie Finlayson**

*Senior Manager, Advisory*

+44 (0) 1481 741897

nataliefinlayson@kpmg.com



© 2021 KPMG Channel Islands Limited, a Jersey company and a member firm of the KPMG global organization of independent member firms affiliated with KPMG International Limited, a private English company limited by guarantee. All rights reserved.

**Document Classification: KPMG Confidential**

# Agenda

**Global Trends in Family Business**

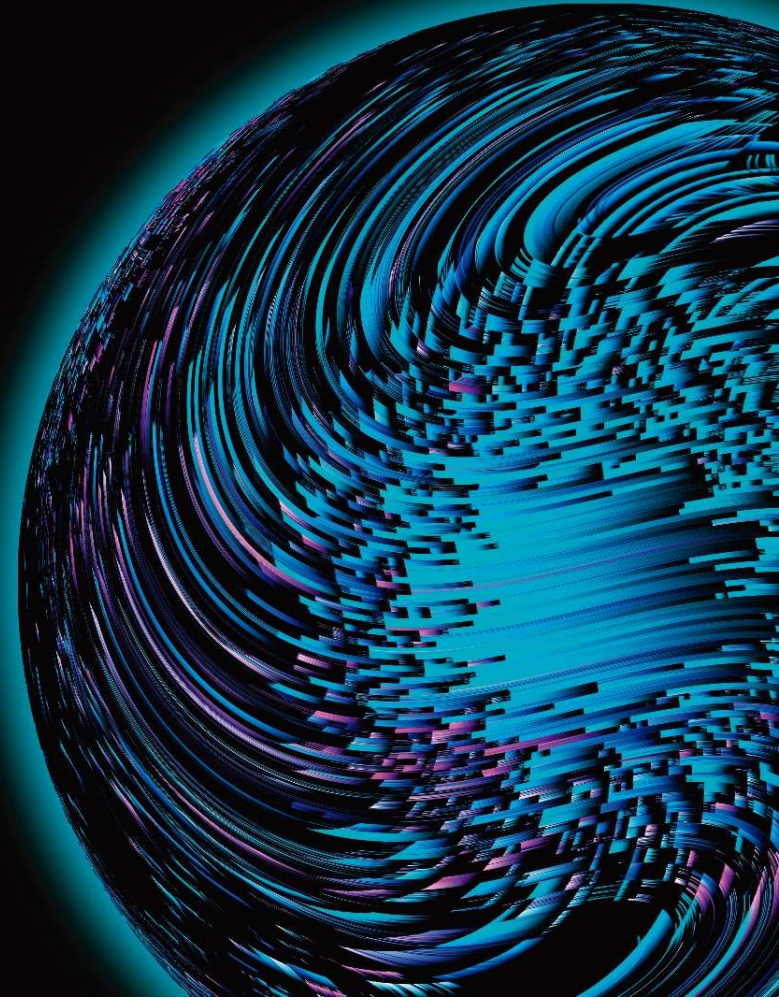
**International Tax Update**

**Reflections from Our Network**

**Closing Remarks**



# Global Trends in Family Business

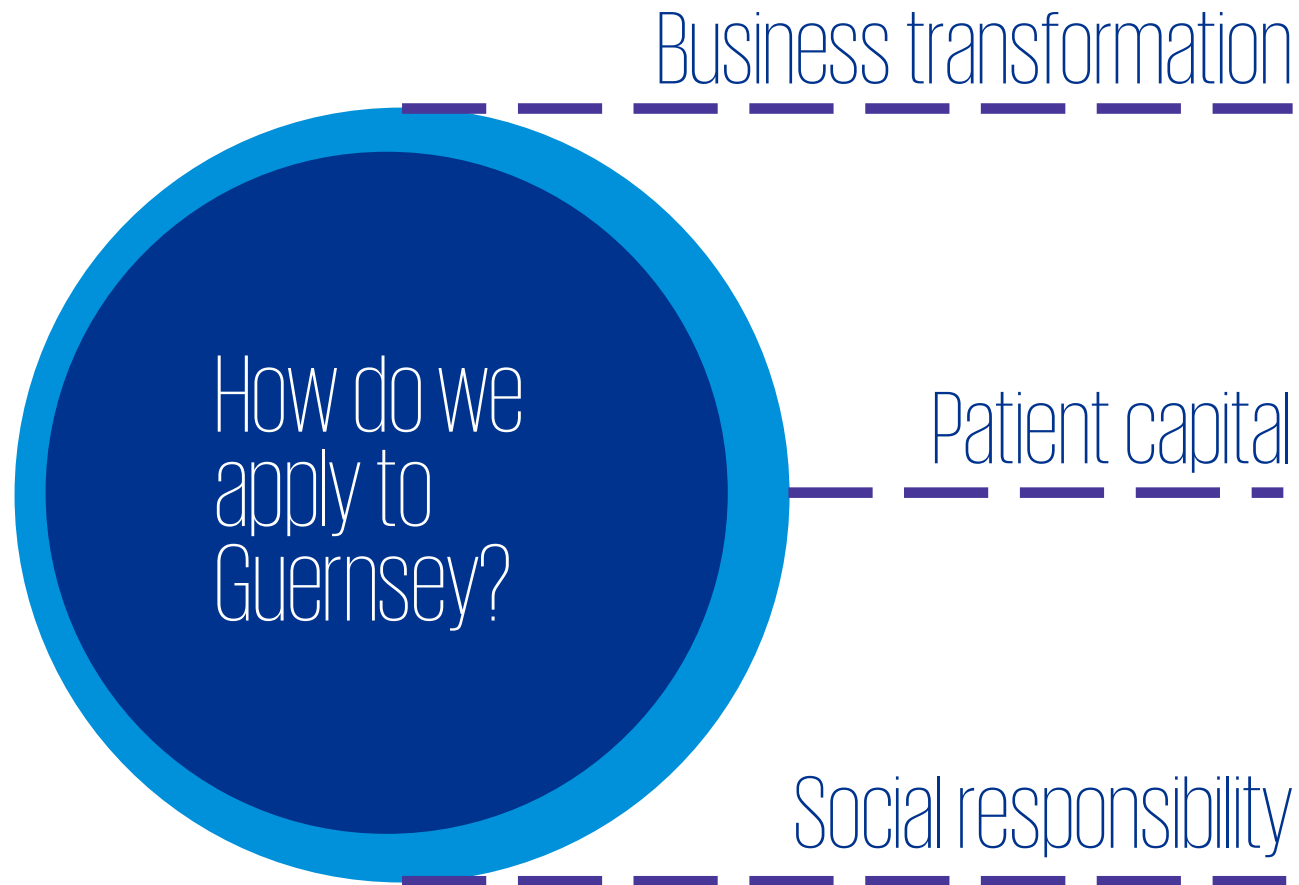


# Tom McGinness



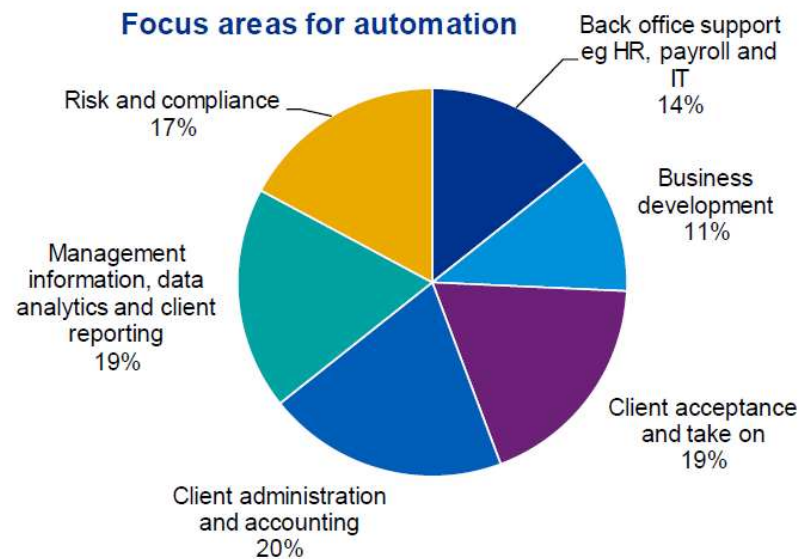
© 2021 KPMG Channel Islands Limited, a Jersey company and a member firm of the KPMG global organization of independent member firms affiliated with KPMG International Limited, a private English company limited by guarantee. All rights reserved.

Document Classification: KPMG Confidential



# Focus Areas for Automation

We asked participants to indicate which areas of their business will likely see an investment in digitisation / automation in the next 12 to 18 months.



# Focus Areas for Social Responsibility



Social consciousness



Emphasis on purpose



Practical implications of Covid



# Exercising Patience



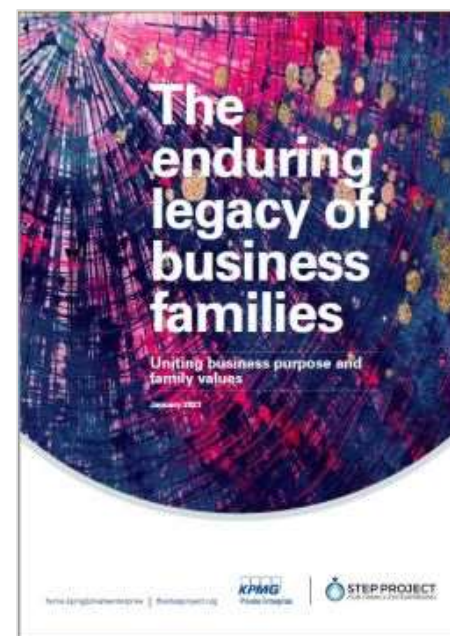
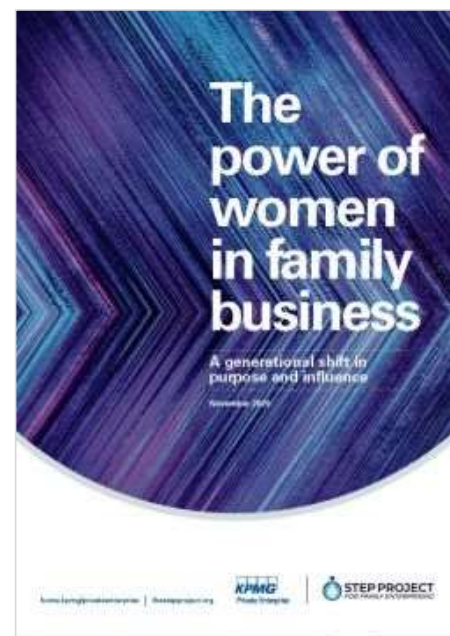
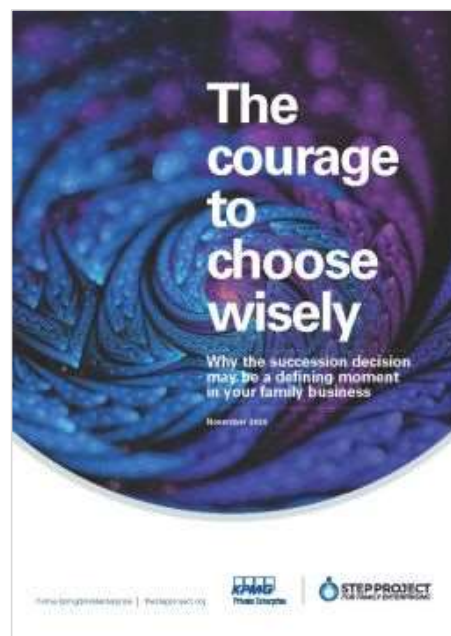
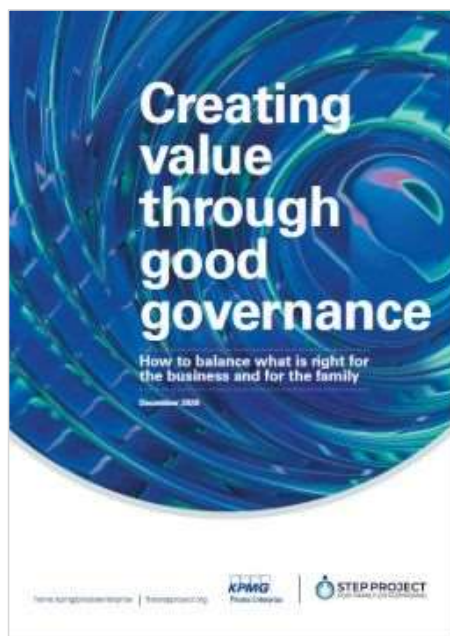
Riding out the  
storm



Care for  
employees



Diversification of  
wealth



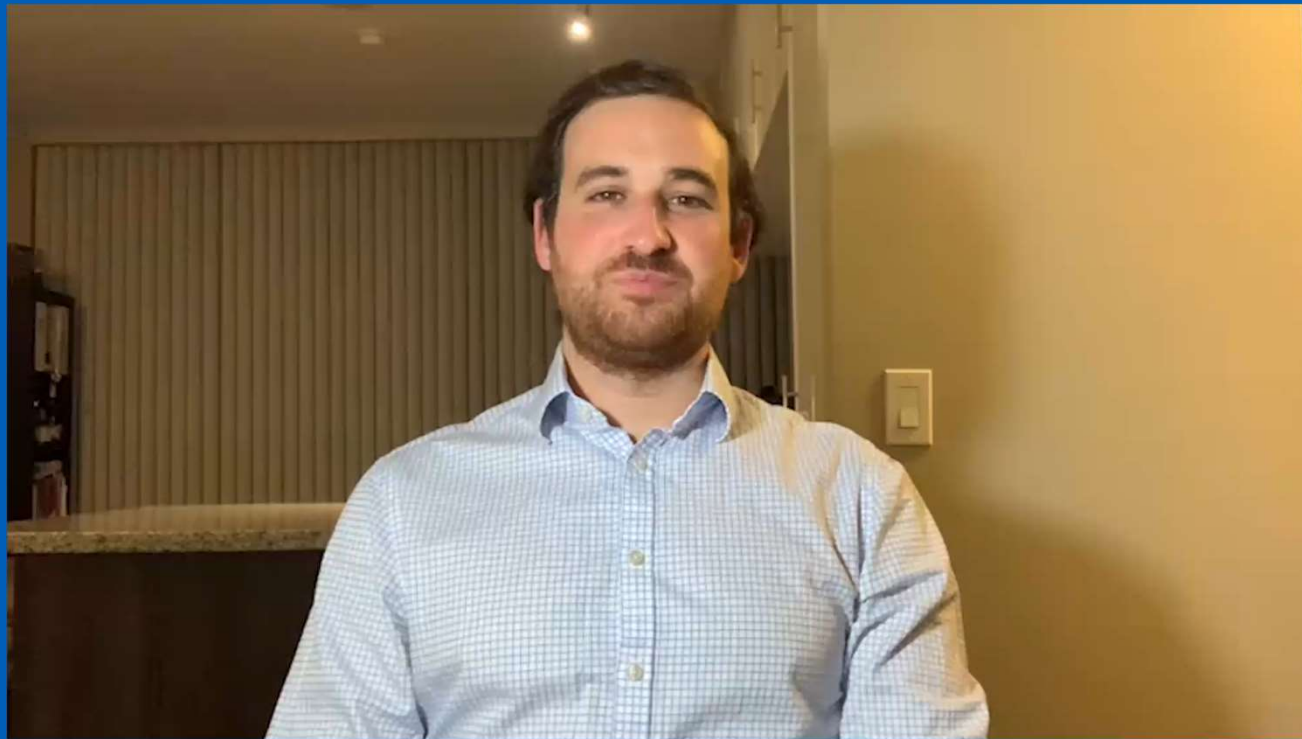
# QR Code



© 2021 KPMG Channel Islands Limited, a Jersey company and a member firm of the KPMG global organization of independent member firms affiliated with KPMG International Limited, a private English company limited by guarantee. All rights reserved.

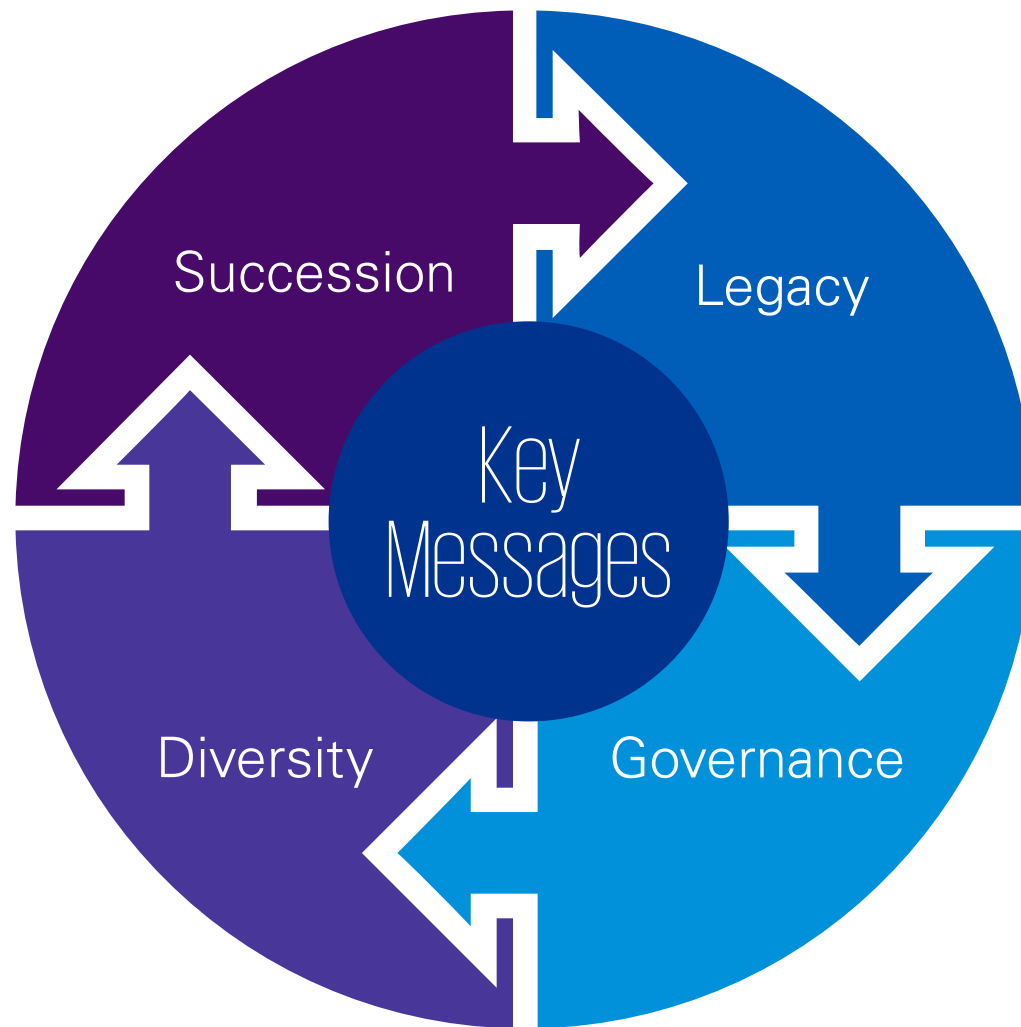
Document Classification: KPMG Confidential

# Daniel Trimarchi



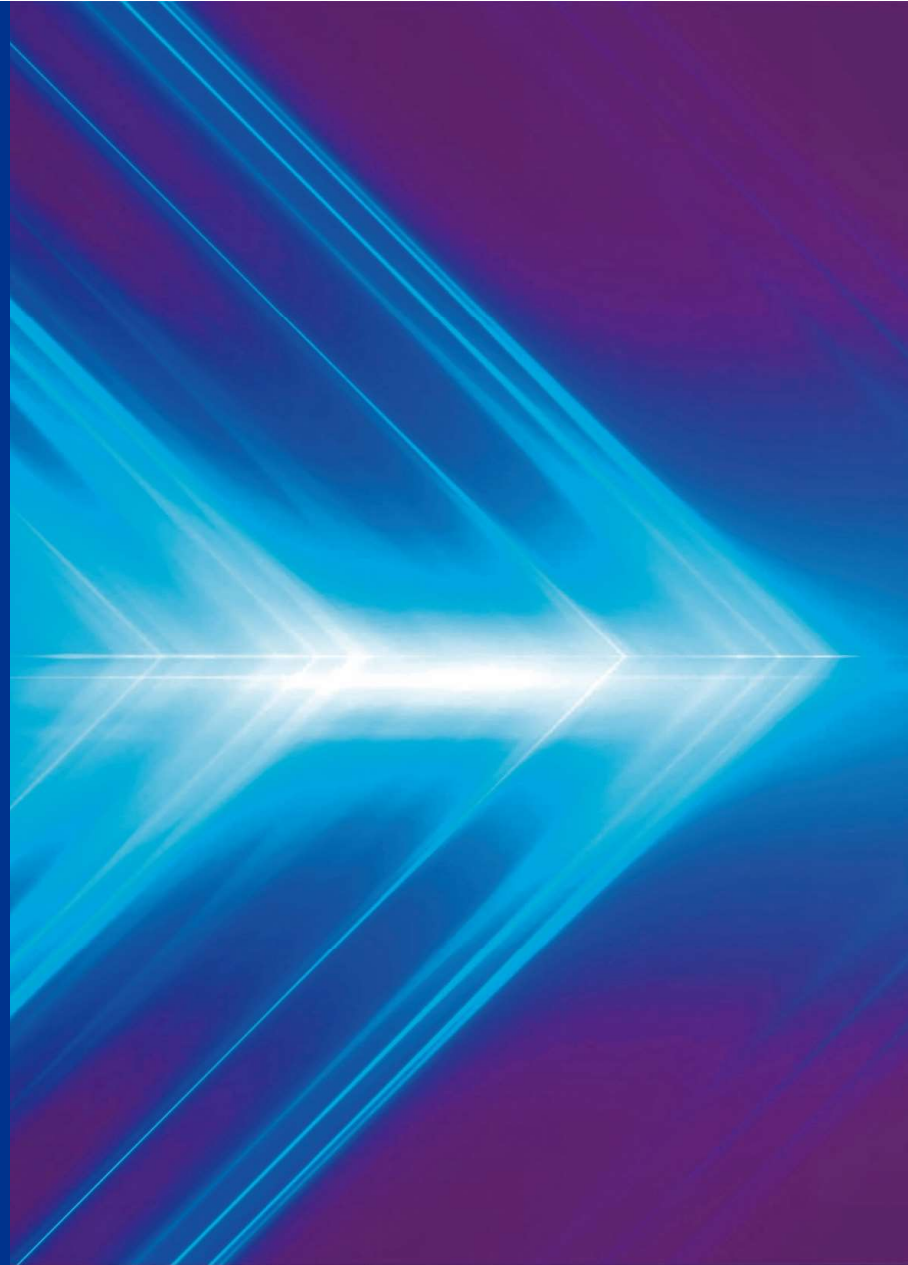
© 2021 KPMG Channel Islands Limited, a Jersey company and a member firm of the KPMG global organization of independent member firms affiliated with KPMG International Limited, a private English company limited by guarantee. All rights reserved.

Document Classification: KPMG Confidential





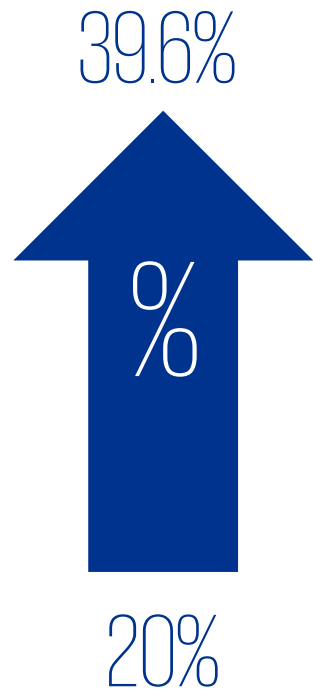
# International Tax Update



# Brad Sprong



# US Key Points



CGT increases for  
HNWs

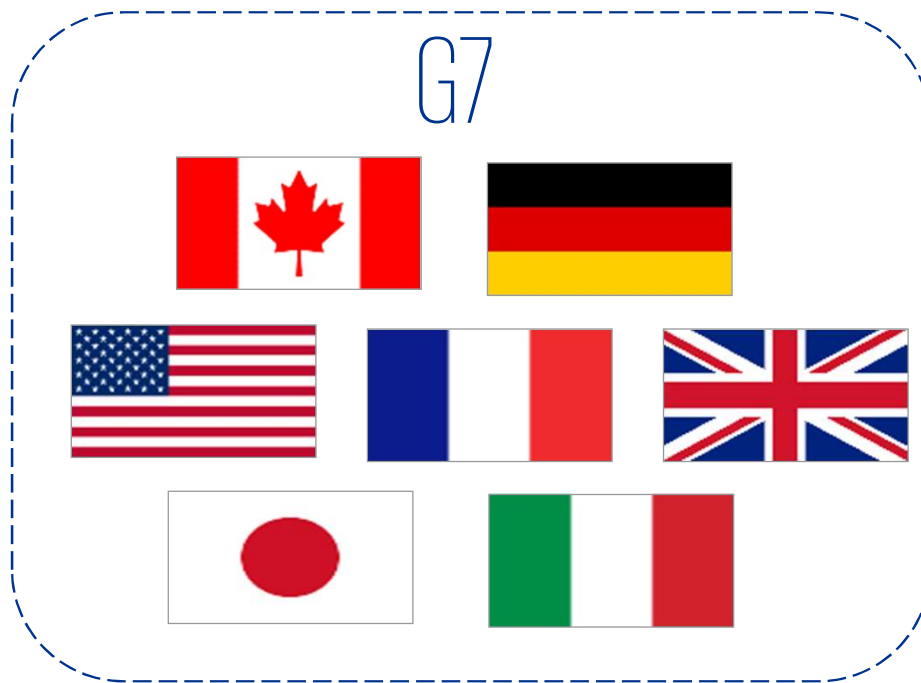


No future step-up in  
base cost at death



Retrospective rate  
increase

# Global Minimum Taxation



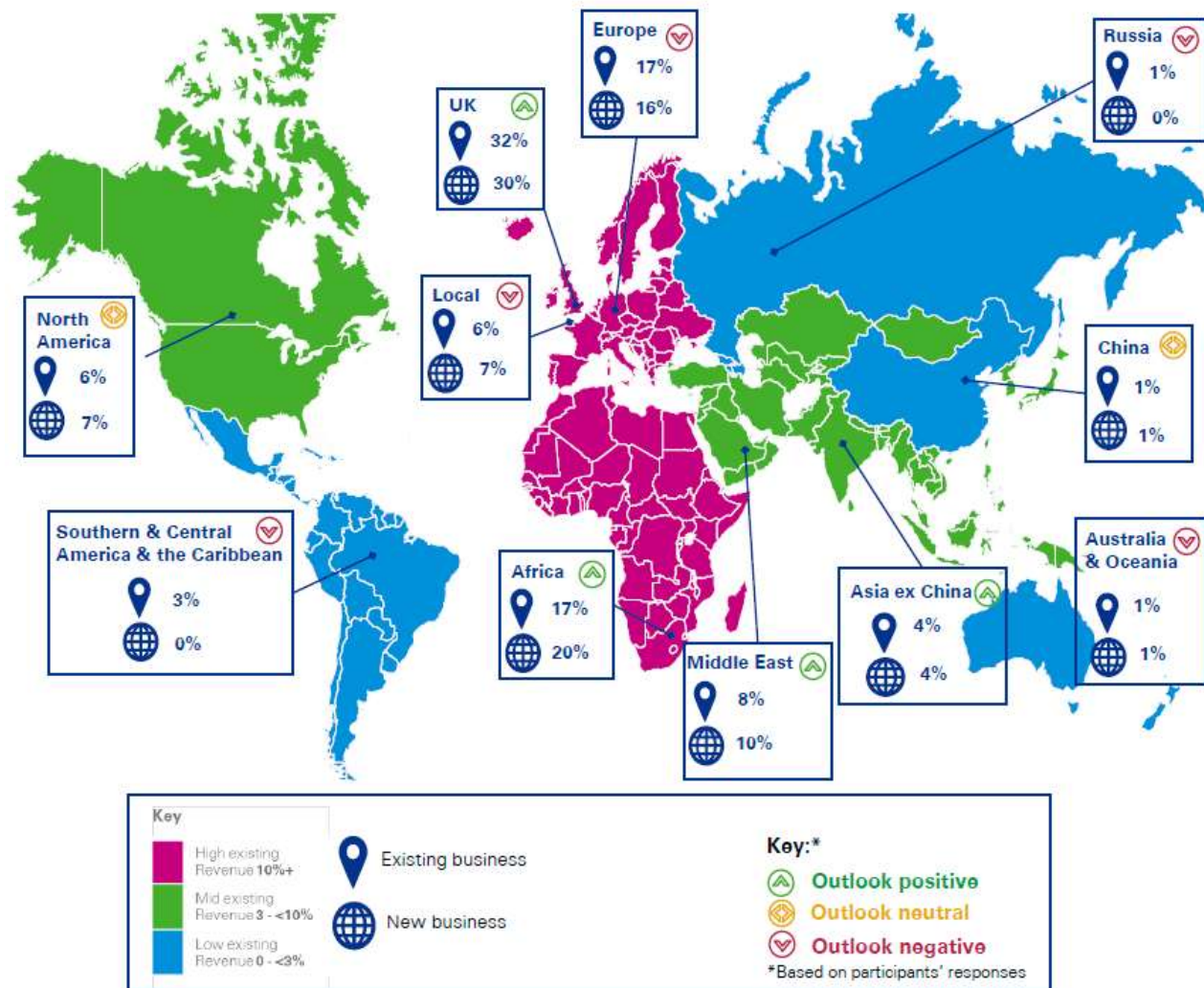
# Reflections from Our Network





# Greg Limb





# Introductions



**Paul Beale**

*Director, Head of Family Office & Private Client*

+44 (0) 1481 755798

paulbeale@kpmg.com



**Natalie Finlayson**

*Senior Manager, Advisory*

+44 (0) 1481 741897

nataliefinlayson@kpmg.com



Thank you



[home.kpmg/channelislands](https://home.kpmg/channelislands)

The information contained herein is of a general nature and is not intended to address the circumstances of any particular individual or entity. Although we endeavor to provide accurate and timely information, there can be no guarantee that such information is accurate as of the date it is received or that it will continue to be accurate in the future. No one should act on such information without appropriate professional advice after a thorough examination of the particular situation.

© 2021 KPMG Channel Islands Limited, a Jersey company and a member firm of the KPMG global organization of independent member firms affiliated with KPMG International Limited, a private English company limited by guarantee. All rights reserved.

The KPMG name and logo are registered trademarks or trademarks of KPMG International.